

WEIR CONCEPTS INC.
PRODUCT GUIDE
- WC QUICK EXHAUST VALVE -



EXPECT QUALITY AND RELIABILITY
using our brand name **QUICK EXHAUST VALVE**



7596 Wagner RD NW
Edmonton , Alberta
CANADA T6E 5B2

780.462.1910 ph

780.462.1959 fax

info@weirconcepts.com

www.weirconcepts.com

MADE IN ALBERTA, CANADA PRODUCTS

Manufactured and assembled at our Edmonton based facility

DETAILS ARE THE DIFFERENCE BETWEEN ORDINARY AND EXCELLENCE



Product Rendering

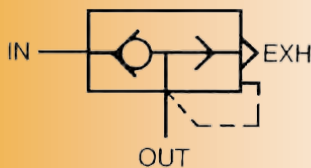
QUICK EXHAUST

Constructed from lightweight aluminum alloy, the housing of this product boasts a sleek and clean surface. It facilitates faster evacuation of power gas from pneumatic actuators, enhancing overall efficiency.

Application

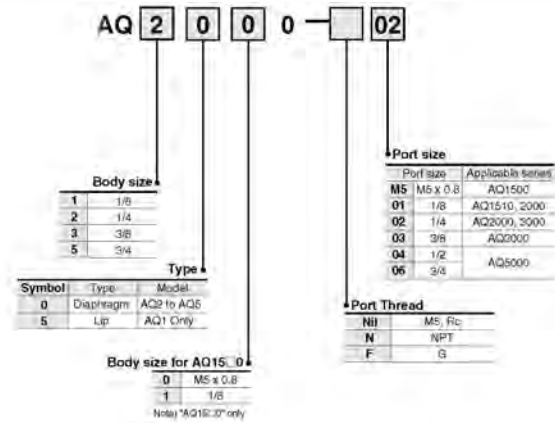
- High exhaust characteristics
- Port size range from 1/8" to 3/4"
- High flow capacity
- Compact and light weight
- Low differential pressure

JIS Symbol



**Solutions for your
company needs**

PERFORMANCE SPECIFICATIONS



Specifications

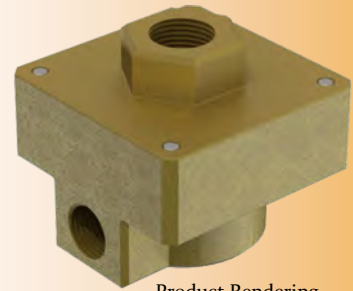
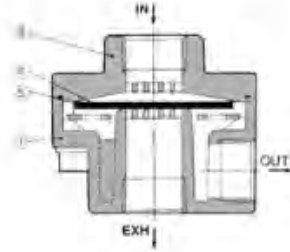
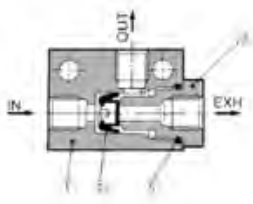
Fluid	-	Air (psi)
Proof Pressure	-	217.5
Maximum Operating Pressure	AQ1510	101.5
	AQ2000 to 5000	145
Minimum Operating Pressure	AQ1510	14.5
	AQ2000 to 5000	7.25
Ambient and Fluid Temperature	-40°F to 140°F	

Weir Concepts offers technical consulting

Model	Port Size	Effective Area (in ²)		Weight (oz.)
		In >> OUT	OUT >> EXH	
AQ1500-M5	M5x0.8	2	0.004	0.804
AQ1510-01	1/8	4	0.009	1.447
AQ2000-01	1/8	25	0.039	3.537
AQ2000-02	1/4	35	0.062	3.376
AQ3000-02	1/4	40	0.065	6.912
AQ3000-03	3/8	60	0.109	6.591
AQ5000-04	1/2	105	0.178	22.184
AQ5000-06	3/4	135	0.279	20.898

AQ1500/1510

AQ2000/3000/5000



Product Rendering

CONSTRUCTION

Component Parts

No.	Description	Material/Model		
		AQ1500	AQ1510	AQ2000/3000/5000
①	Body	Zinc die casted	Zinc die casted	Aluminum die casted
②	Guide	Brass	Brass	—
③	Cover	—	—	Aluminum die casted

Replacement Parts

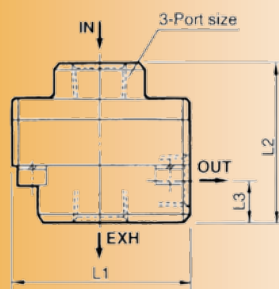
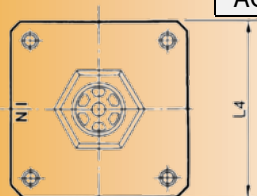
No.	Description	Material	Part No.				
			AQ1500	AQ1510	AQ2000	AQ3000	AQ5000
④	Valve	NBR	30083	30093	30073	30053	30063
⑤	O-ring	NBR	9 x 7 x 1	JISB2401P-7	CA40-1601	CA50-1602	30066

Model	Port Size	L1	L2	L3	L4
AQ2000	1/8, 1/4	1.77	1.57	0.39	1.77
AQ3000	1/4, 3/8	2.20	1.97	0.49	2.20
AQ5000	1/2, 3/4	3.39	2.95	0.71	3.35

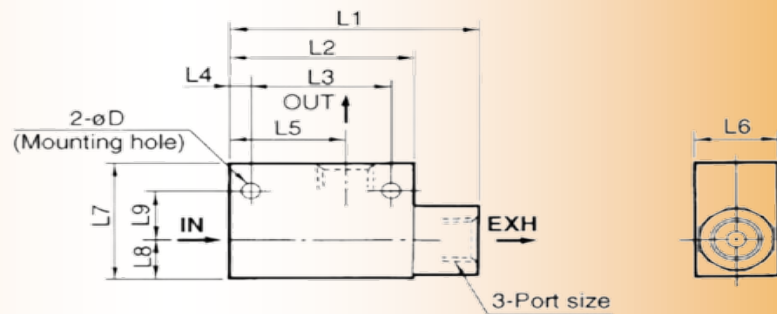
DIMENSIONS

AQ2000/3000/5000

Model	Port Size	L1	L2	L3	L4	L5	L6	L7	L8	L9	D
AQ1500	M5x0.8	0.91	0.79	0.55	0.12	0.49	0.47	0.59	0.22	0.26	0.12
AQ1510	1/8	1.77	1.3	0.98	0.16	0.83	0.59	0.98	0.31	0.43	0.17



AQ1500/1510



PRODUCT GUIDE

WEIR CONCEPTS WC QUICK EXHAUST VALVE



SOLUTIONS FOR YOUR COMPANY NEEDS

- HELP DESK -

FOR YOUR SUPPORT AND SERVICE

24 hours a day, 7 days a week

NO CHARGE ON CALLS SERVICE

We offer technical assistance, product knowledge, and reliable trouble shooting

Brochures/Maintenance info available online www.weirconcepts.com

HELP DESK EXPERTISE PROVIDED AT WEIR CONCEPTS

7596 Wagner RD NW

Edmonton, Alberta

CANADA, T6E 5B2

780.462.1910 ph

780.462.1959 fax

info@weirconcepts.com

www.weirconcepts.com

Version 3.0

