

WEIR CONCEPTS INC.

PRODUCT GUIDE

- WC LIMIT SWITCH APL SERIES -



SCAN ME 

EXPECT QUALITY AND RELIABILITY

using our brand name LIMIT SWITCH - APL SERIES

Version 4.0

Head Office:

7596 Wagner RD NW
Edmonton , Alberta CANADA T6E 5B2
info@weirconcepts.com



Toll Free 1.866.462.1910
780.462.1910 ph | 780.462.1959 fax

DETAILS ARE THE DIFFERENCE BETWEEN ORDINARY AND EXCELLENCE

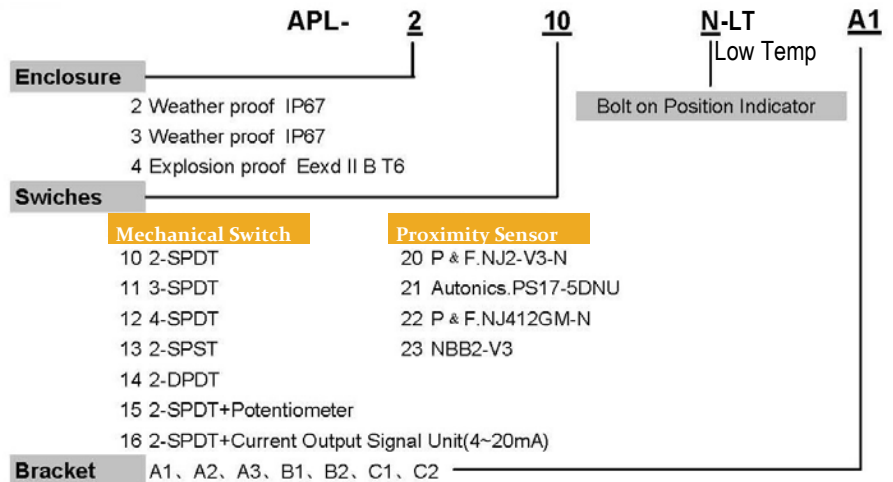


LIMIT SWITCH - APL Series

- Aluminum die-casting housing and powder coated.
- Bolt on visual position indicator for secure waterproofing.
- Quick set CAM - spring loaded splined cam.
- Multi point terminal strip - standard 8 points enough strips for connection.
- Dual cable entries.
- Captive cover bolts - no chance of losing bolts while the cover is open.
- Easy mounting - NAMUR standard stainless steel shaft and bracket

**Solutions for your
company needs**

ORDERING



Weir Concepts offers technical consulting and provides a total end to end solution.

Manufacturer - Fabricator - Distributor



Made in Canada at our Edmonton Based Facility



EMERGENCY SHUTDOWN SYSTEMS

Build your assembly with help for a Total End to End Solution



#WEIRHERE

#onestopshopping



weirconcepts.com



CONTACT NOW 24/7

780.462.1910

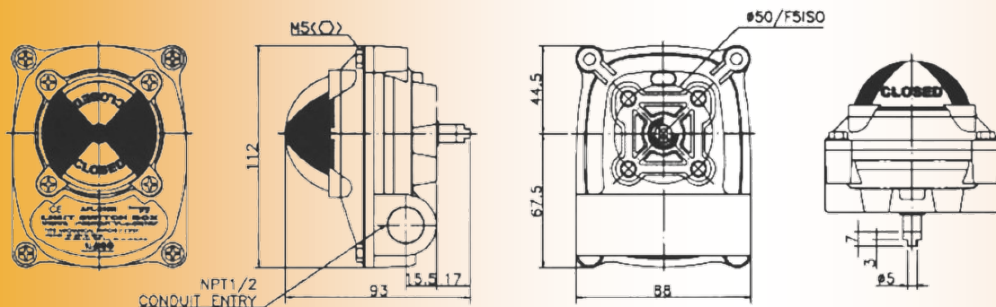
Details are the difference between ordinary and EXCELLENCE

WC LIMIT SWITCH - APL SERIES

TECHNICAL DATA

| Model | APL310N | | APL410N | | APL410N-LT | |
|-------------------------------------|--------------|-------------|--------------------------------------|-------------|--------------------------------------|-------------|
| | Standard | Option | Standard | Option | Standard | Option |
| Enclosure | IP67 | | IP67 Eexd II B T6 (EN50014/50018) | | IP67 Eexd II B T6 (EN50014/50018) | |
| Explosion Proof | | | | | | |
| Temperature Range | -25°C ~'60°C | | -25°C ~'60°C | | -40°C ~'60°C | |
| Cable Entry | 2x1/2NPT | PT1/2 PF1/2 | 2x3/4NPT | PT3/4 PF3/4 | 2x3/4NPT | PT3/4 PF3/4 |
| Terminal Strips | 8 | 9 ~24 | 8 | 9 ~24 | 8 | 9 ~24 |
| Position Indicator | -0 ~'90° | -0 ~'180° | -0 ~'90° | -0 ~'180° | -0 ~'90° | -0 ~'180° |
| Open - Yellow Close - Red | | | | | | |
| Mechanical Switch, Proximity Sensor | | | | | | |

DIMENSIONS - UNIT: MM

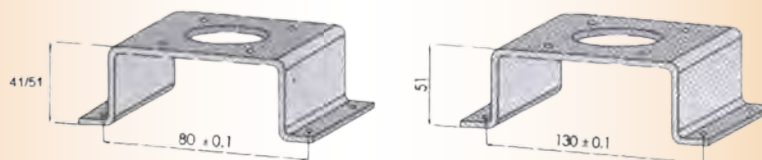


WCAPL-210 BRACKET



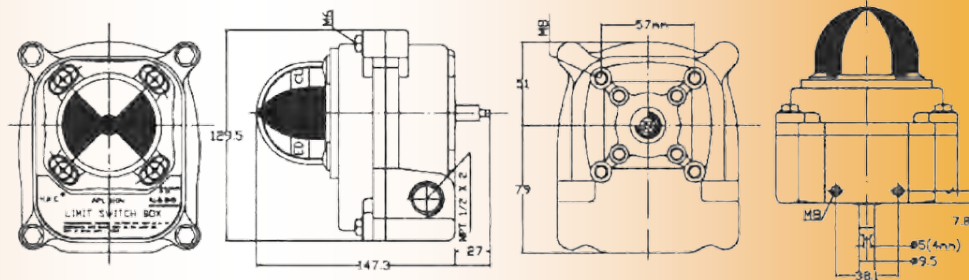
STANDARD NAMUR SHAFT

WCAPL-210 SERIES

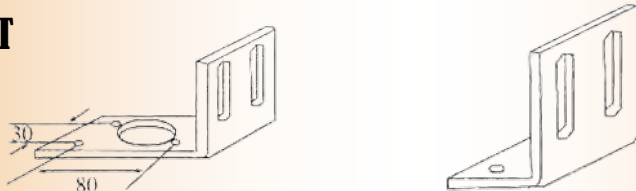


A1 30×80 H: 20
A2 30×80 H: 30

A3 30×130 H:30



WCAPL-310 BRACKET



B1 30×80 H:20~30

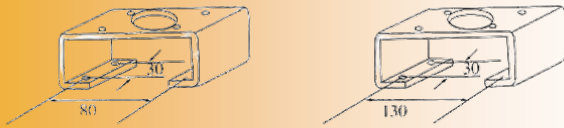
B2 30×130 H:30~50

STANDARD NAMUR SHAFT

WCAPL-310 SERIES

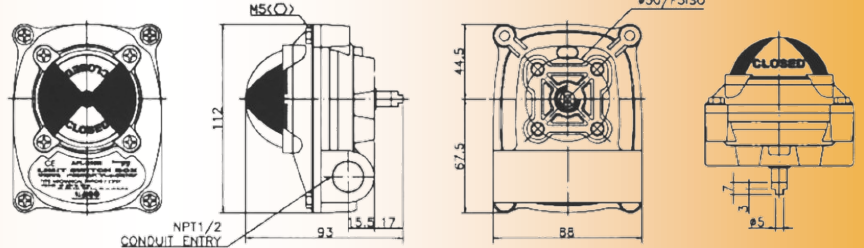
PRODUCT GUIDE

WEIR CONCEPTS WC LIMIT SWITCH - APL SERIES



C1 30×80 H:30

C2 30×130 H:30



SOLUTIONS FOR YOUR COMPANY NEEDS


 SUBSCRIBE



On Site
Help Desk
#WEIRHERE

CONTACT NOW 24/7

toll free 1.866.462.1910 
 info@weirconcepts.com 
 www.weirconcepts.com 



HEAD OFFICE:

7596 Wagner RD NW
 Edmonton, Alberta CANADA T6E 5B2
 info@weirconcepts.com
 1.866.462.1910 Toll Free
 780.462.1910 ph | 780.462.1959 fax

HELP DESK EXPERTISE

FOR YOUR SUPPORT AND SERVICE

24 hours a day, 7 days a week

NO CHARGE ON CALLS SERVICE

We offer technical assistance, product knowledge, and reliable trouble shooting

Brochures/Maintenance info available online VIA our Technical Library

