

# WEIR CONCEPTS INC.

## PRODUCT GUIDE

### WCM HYDRAULIC ACTUATORS SERIES

- WCM35 / WCM50 / WCM60 / WCM70 -

## IMPROVEMENTS



~ WARRANTY AND EXCHANGE PROGRAM ~



Manufactured at Weir Concepts Inc.



7596 Wagner RD NW

Edmonton , Alberta

CANADA T6E 5B2

780.462.1910 ph

780.462.1959 fax

info@weirconcepts.com

www.weirconcepts.com

**MADE IN ALBERTA, CANADA PRODUCTS**

Manufactured and assembled at our Edmonton based facility

**DETAILS ARE THE DIFFERENCE BETWEEN ORDINARY AND EXCELLENCE**

## Weir Concepts offers technical consulting and provides a total end to end solution.

**WCM50 AND WCM35 HYDRAULIC ACTUATORS** Drive cases made from durable, light-weight cast aluminum come standard.

Ideal for low temp and sour service conditions

### FEATURES - design improvements

1. Partial Nemur pad for limit switch installation
2. Bolted toggle latch for ease of repair
3. Travel stop cap provides static seal eliminating thread leaks
4. Two flats on drive shaft to allow for re-orientation of actuator without new hardware
5. One piece of solid Delrin guide:
  - Eliminates piston rod slack allowing for smoother operation
6. O-ring piston seals have a longer piston life and are simple to replace

### QUALITY AND PERFORMANCE TESTED

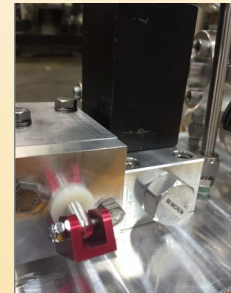
Feature #1



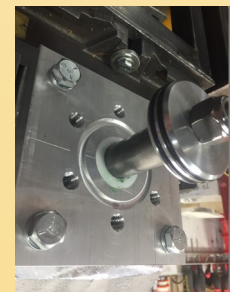
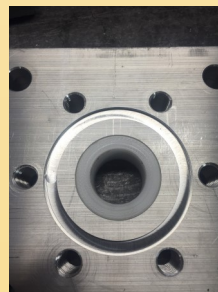
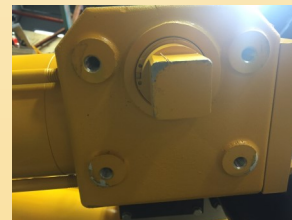
Feature #2



Feature #3



Feature #4



Features #5 and #6



Each WCM35 and 50 is frozen and tested for a **MINIMUM of 24 HOURS** to  $-30^{\circ}\text{C}$  /  $-22^{\circ}\text{F}$



Version 3.0

**CALL US TODAY** 24 hours a day, 7 days a week